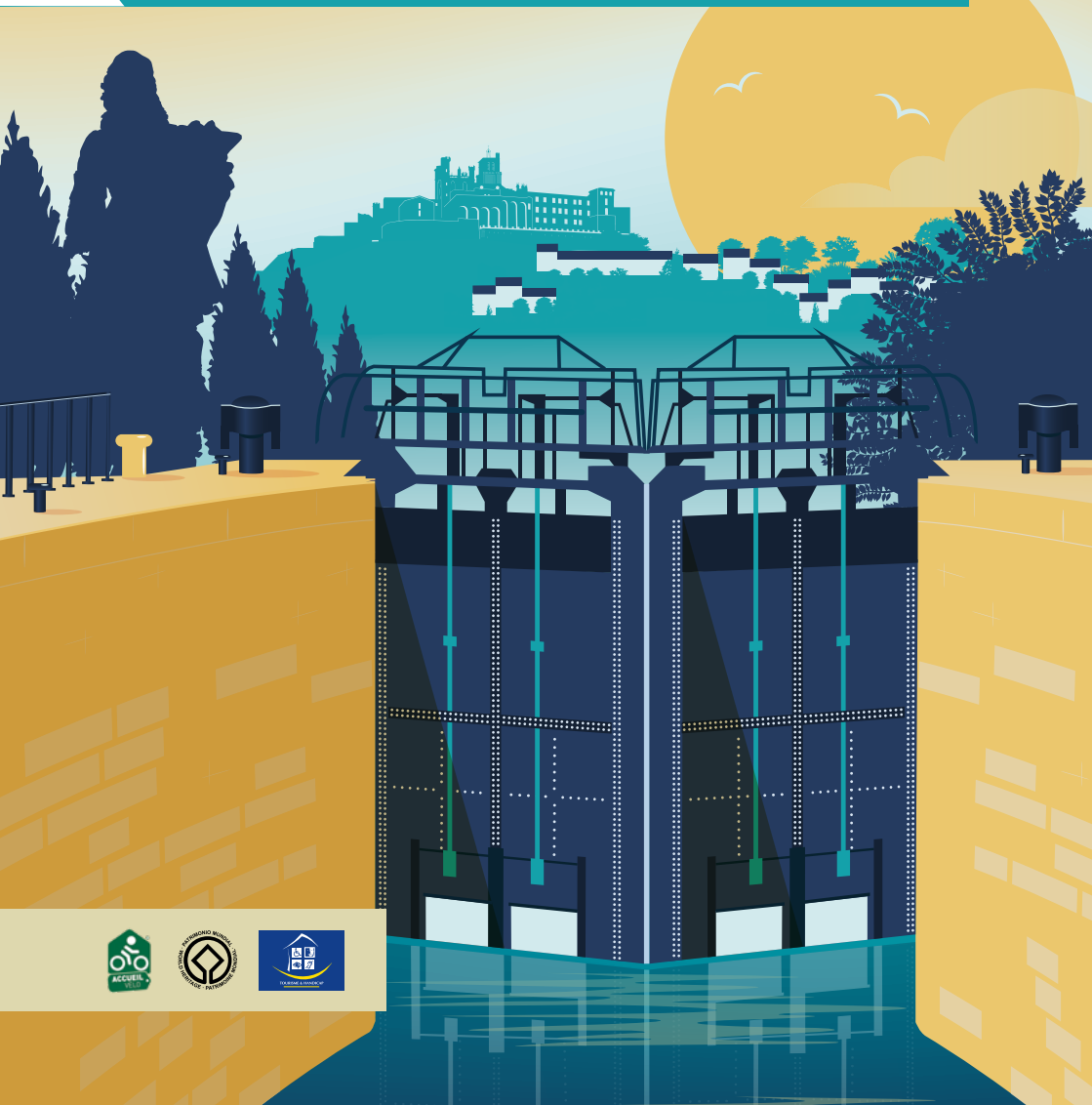




# THE FONSERANES 9 LOCKS AND THE CANAL DU MIDI





# L'ORANGERIE

Béziers



Cuisine Bistronomique à base de produits de saison. Terrasse, salle climatisée.

[www.lorangeriebeziers.com](http://www.lorangeriebeziers.com)

 04 67 49 07 20 • [lorangeriebeziers@yahoo.com](mailto:lorangeriebeziers@yahoo.com) • 5 rue Guibal - 34500 Béziers

LA FAMILLE DES VINS DE  
**BEAU VIGNAC**  
Pomérols • Meze • Pignan



Animations, vente & dégustation

**Caveau Pomerols**  
Avenue de Florensac  
04 67 77 89 94

**Caveau Meze**  
Route de Pézenas  
04 67 43 80 48

**Caveau Pignan**  
Avenue de Courmonterral  
04 67 47 70 15

[www.cave-pomerols.com](http://www.cave-pomerols.com)

L'ABUS D'ALCOOL EST DANGEREUX POUR LA SANTÉ, À CONSOMMER AVEC MODÉRATION





# CONTENTS

<b>Locks site map</b>	P.4-5
<b>The Canal du Midi in figures</b>	P.6
<b>The work of an enthusiast</b>	P.7
<b>Engineering structures</b>	P.8-9
<b>Things to do : lively locks</b>	P. 10-11
<b>Sailing calendar</b>	P.12
<b>Notice for walkers</b>	P.13
<b>Did you know ?</b>	P.14
<b>Hiking and 2-wheeled tours</b>	P.16
<b>Béziers, a river port</b>	P.17
<b>Villeneuve-lès-Béziers, Cers</b>	P.18

Photo credits: Karine Grégoire, Charlotte Guitton, Laurent Piccolillo, Gilles Deschamps, Jean-Pierre Degas, Monique Boulze-Pillevesse, Gilles Deschamps, Amélie Firmin, Nicolas Castets. Non-contractual document, based on information provided as of March 15, 2025. As part of its sustainable development, the Béziers Méditerranée Tourist Office prints its brochures with vegetal inks, on recycled paper, in printing houses with all the eco-responsible labels.

Layout: Comm. Ville/Agglo service. Printing: Combes & Hund. Advertising: DIXICOM  
Alcohol abuse is dangerous for your health. Consume in moderation.

# SITE MAP

- 1 PARKING TICKET MACHINE
- 2 FOOTBRIDGE TO THE SITE
- 3 17<sup>TH</sup> CENTURY MODEL OF BÉZIERS AND ITS AREA, VISTA
- 4 VISITOR CENTRE - TOURIST INFORMATION, IMMERSIVE CINEMA ETC.
- 5 JETTY FOR ELECTRIC BOATS - CRUISE
- 6 RAMP OFF THE LOCKS
- 7 LOCK-KEEPERS' ISLAND
- 8 PLACE DU BASSIN - PUBLIC LAVATORIES
- 9 ESPLANADE NOTRE-DAME
- 10 PICNIC AREA
- 11 CRUISE BOAT JETTY
- 12 FOOTBRIDGE
- 13 RESTAURANT "LE 9"
- 14 BELVEDERE
- 15 WATER SLOPE



P

1

2

3

13

14

15

4

5

6

TOWPATH  
EUROVÉLO 8 «the Mediterranean by bike»  
V 80: the Canal des 2 mers by bike  
Towards Colombiers, the Malpas tunnel  
and Capestang

- ☀️ SHADED AREAS
- ⋯ HIKING AND BIKING TRAILS  
« FROM THE 9 LOCKS TO THE CATHEDRAL »
- D DEPARTURE OF THE HIKING TRAIL,  
TOWARDS THE CATHEDRAL



TOWPATH  
EUROVÉLO 8 «the Mediterranean by bike»  
V 80: «the Canal des 2 mers by bike»  
Towards the canal-bridge,  
the Quai Port-Neuf, Béziers centre,  
Villeneuve and Cers

Connecting the Atlantic to the Mediterranean via a canal to both avoid pirate attacks in the Strait of Gibraltar and shorten the lengthy freight route... The Romans thought about it. Charlemagne planned it. So did François I, Henri IV. But it was Béziers-born Pierre-Paul Riquet who made it happen during the reign of Louis XIV.

## THE CANAL DU MIDI IN FIGURES

### ► LENGTH:

**240 KM**

between Toulouse and Sète

### ► CONSTRUCTION SITE STAFF:

**11,400** men

and **600** women

### ► VEGETATION:

**42 000** planetrees planted, between Toulouse and Sète in the 19th century. Due to disease, they are currently being replaced by trees that suit the Mediterranean climate (hackberry, strawberry tree etc.).

### ► VISITOR NUMBERS:

over **8 000** boats go through the Fonseranes locks in Béziers every year between March and late October

### ► DEPTH:

**2M** average

### ► WIDTH:

**20-24M**

### ► STRUCTURES:

**63** locks, and **350** bridges, spillways, reservoirs, etc.

### ► CONSTRUCTION DURATION:

**14 YEARS** (1667-1681)

### ► EXTENSION:

to the Atlantic from Toulouse to Bordeaux, via the channel lateral to the Garonne river

**193 KM**

long, inaugurated 1856

### ► OWNER : THE STATE

**350** people from Voies Navigables de France provide peace and safety to Canal du Midi users

### ► NUMBER OF LOCKS

There are **12** locks on the Canal du Midi, in its crossing of Béziers Méditerranée

## THE CANAL DU MIDI IN DATES

**1609**

Birth of Pierre-Paul Riquet in Béziers

**1666**

With Colbert's support, Louis XIV authorised Riquet to start work on the site

**1667**

Laying the foundation stone for the canal

**OCT 1<sup>ST</sup> 1680**

Pierre-Paul Riquet dies in Toulouse

**MAY 24<sup>TH</sup> 1681**

Official inauguration of the Canal Royal du Languedoc, renamed Canal du Midi after the Revolution

**1984**

Inauguration of the water slope

**1990**

Last commercial freight boats on the Canal du Midi


**OCTOBER 1996**

 The 9 locks at Fonseranes, listed as historic monuments (French National Heritage)

**DECEMBER 1996**

 The Canal du Midi listed as a World Heritage Site by UNESCO


**AVRIL 1997**

 The Canal du Midi is listed among french "protected sites"

**2015-2017**

Site under construction, for a complete renovation and upgrading.

**2018**

 The Fonseranes 9 locks are listed among "Occitany grand sites".



# THE WORK OF ONE ENTHUSIAST

**Pierre-Paul Riquet** was certainly a genius, visionary, sharp strategist and... a bit mad.

- **GENIUS:** who would have thought a tax inspector (or «Languedoc salt tax recipient» as it was known at the time) would be behind a structure as huge as the Canal du Midi? Solving the issue of its water supply that people had been trying to crack since Roman times. Hats off...
- **VISIONARY:** Riquet's canal fuelled the economic and agricultural boom in the Languedoc; he provided thousands of labourers with working conditions that enraged factory bosses at the time... He took away the King of Spain's tidy port taxes and Louis XIV loved him for it. Not bad...
- **STRATEGIST:** despite bringing fortune and life to the area, Pierre-Paul Riquet worked for the Languedoc's future by leaving it a masterpiece that is now famous the world over. And he secured his family's financial future with taxes and excise. Smart inheritance...
- **A BIT MAD:** throwing himself into a project like this (the 2<sup>nd</sup> biggest during Louis XIV's reign after Versailles) when he was 58 -a ripe old age back then- is a sign of an eccentric mind. But he did it and hung in there almost until the end.

# THE CANAL STRUCTURES



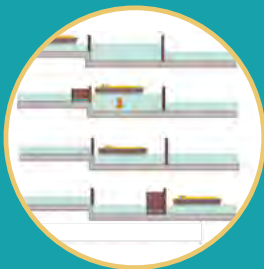
## THE FONSERANES 9 LOCKS

Originally made up of a row of nine locks, the Octuple (a row of 8 staircase locks, a unique design in the history of river transport) enabled boats to cover a 13.6m elevation for a 300m length.

The last lock actually covers a 21.6m elevation level with the Orb River! Pierre-Paul Riquet gifted this wonder of civil engineering - which he called «Neptune's staircase»- to Béziers by building basins and channels in the space of 4 years with unobstructed views of the cathedral and ramparts.

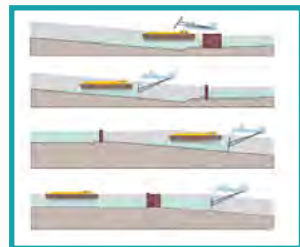
A great tribute to his hometown.

Only 7 locks are still in use. They epitomise the Canal du Midi and are ovoid in shape to better withstand the rushing water that pours in every time the basin fills up..



## THE FONSERANES WATER SLOPE

Replacing locks with a water slope is common practice in Northern European canals. In Fonseranes, this structure was meant to speed up clearing the 9 locks (half the time) by avoiding the slow journey in the «octuple» next to it and primarily enable modern freight boats to clear with ease (they were too long to enter the 9 locks' traditional basins). But the water slope had countless design faults and only came into use in 1984 when commercial freight was coming to an end. So, in 1990, it ceased activity. Now tourists/ sailors gaze in wonder at this useless machinery as Riquet's trusty locks mock.





## THE CANAL BRIDGE

The barges going down Fonsèranes had to clear the Orb River before picking up the canal upstream. But they were often hit by the river's random rises in water level which caused many to capsize and sink. The canal bridge took up the slack in 1858: the canal's route was diverted at the 7<sup>th</sup> lock and ever since barges have sailed alongside the Orb, 12m above the river. It's 28m wide, 240m long and provides boats with access to Port-Neuf. The canal bridge is also where you get some of the best views of the «Béziers Acropolis».



The Opening of the Bridgewater Canal, 1761 by Ford Madox Brown, to be seen at Manchester Town Hall

## THE BRIDGEWATER CANAL, INSPIRED BY THE CANAL DU MIDI

The Bridgewater Canal, named by its creator and owner, Francis Egerton, 3<sup>rd</sup> Duke of Bridgewater, was the first of its kind in England. Inspired to the Duke by the Canal du Midi, that he visited during his « grand tour » of Europe in 1753-1755. The Bridgewater canal connects Runcorn, Manchester and Leigh, in North West England to transport coal from the duke's mines, towards Manchester. It was opened in 1761 (80 years after the Canal du Midi), and considered as the first great achievement of the « canal age ». It captured the public imagination because of its engineering feats -it required the construction of the first navigable aqueduct ever built in England, to cross the river Irwell, just as did the canal-bridge in Béziers : Pierre-Paul Riquet had a successor ! (\*)

(\*) Source : European route of Industrial Heritage (erih.net)

# ACTIVITIES



## THE VISITOR CENTRE

The «beating heart» of the 9 locks site with everything you need to explore, experience, eat and drink... It's home to:

### BÉZIERS MÉDITERRANÉE TOURIST INFORMATION OPEN ALL YEAR:

- 01/01 to 02/14/25: Saturday and Sunday, 9:30am - 1pm and 2pm - 6:30pm;
  - from 15/02 to 02/03/25: every day, 9:30am - 1pm and 2pm - 6:30pm;
  - 03/03 to 31/03/25: Saturday and Sunday 9:30am - 1pm and 2pm - 6:30pm;
  - 01/04 to 30/09/25: every day 9:30 am - 6:30 pm ;
  - 01/10 to 02/11/25: every day 9:30am - 1pm and 2pm - 6:30pm;
  - 03/11 to 19/12/25: Saturday and Sunday 9:30am - 1pm and 2pm - 6:30pm;
  - from 20/12/25 to 04/01/26: every day 9:30am - 1pm and 2pm - 6:30pm;
- Closed on January 1<sup>st</sup>, December 25<sup>th</sup> and November 11<sup>th</sup>

### AUDIOGUIDE TOUR: (90 mins) in 14 stages.

A free audioguide/vehicle on the car park; 2 €/extra audioguide.

**GIFT SHOP:** Exciting eco-friendly souvenirs; over 500 different wines and cakes, olives and honey. Bookshop (history, fiction, comics etc.).

The Canal du Midi game, jewellery etc. Visit the ticket office (next to Tourist Information): to set sail on boat rides, captain your own electric boat, hop on the tourist train to central Béziers...



### IMMERSIVE CINEMA:

#### « THE TALE OF THE CANAL DU MIDI »

The 9 locks and Canal du Midi all around you, from the floor to the walls.

**DURATION:** 14 mins.

**SESSIONS** 7 days a week

19 people/session.

**PRICE:** adult 3 €, child (6-12 years old) 2 €, schools 2 €



### TREASURE HUNTS : "ALICE AND THE MAGICAL FOUNTAIN", AND "MELI MELO"

Both treasure hunts exist in english. With the help of tools gathered by the Tourist Board in a backpack, children and families explore the 9 locks, the river Orb and the town to solve mysteries. Those who find the right answer win a nice reward.

Available all year, and in virtual version on PC, tablet and smartphone.

• Alice Treasure hunt. DURATION 50'. AGE : 7-11. PRICE :5 €/backpack

• Meli Melo Treasure hunt. DURATION 1h30'. AGE : from 6 years on.

PRICE : 5 € /backpack, available at the Tourist Board.



## CRUISES AND BOAT EXCURSIONS

Visit the ticket office (next to Tourist Information):  
to set sail on boat rides, captain your own electric  
boat, hop on the tourist train to central Béziers...

Book at the counter.

### LES BATEAUX DU MIDI

Cruises from 2 hrs to a full day, with or without a meal.

**PRICES:** from € 22 to € 60/adult ; from € 12 to € 35 /child  
(4-12 years)

☎ (00 33) (0)4 67 36 51 24

### LES BATEAUX DU SOLEIL

Cruises for 2 hrs or a full day, with or without a meal.

**PRICES:** from € 16 to € 54/adult, from € 10 to € 30/child  
(4-11 years)

☎ (00 33) (0)4 67 94 08 79

### CAP AU SUD

Three guided cruises of 1h, 2 or 3 hours.  
Passage of the locks and picnic on board.

**PRICES:** € 13 - € 27 /adult, € 8 - € 15/child (4-11 years old)

☎ (00 33) (0)7 82 09 13 51

### ELECTRIC BOATS WITH NO LICENCE

Rides from 1 to 3 hours. Every day.  
2 people: €30 3/4 people: €40 5/6 people: €45  
And €25/ additional hour. From April to October.

☎ 06.51.59.31.54



### BÉZIERS CITY TOUR, BEZIERS TOURIST TRAIN

Explore Béziers, Pierre-Paul  
Riquet's hometown (Fonseranes/  
central Béziers). Start point  
Coche d'Eau Visitor Centre.

**Highlight:** you can stop and get off  
the train in the centre to visit it or go  
shopping... Information and booking.

**PRICES:** 8 €/adult , 5 €/child  
(4-11 years), 2 €/pet

### INFORMATION AND BOOKING

☎ +33 (0)6 51 59 31 54

## CITY CARD



VISIT MORE  
AND SPEND  
LESS

ON SALE AT  
THE TOURIST OFFICE,  
INTERPRETATION  
CENTRE

# SAILING CALENDAR



The Canal du Midi may be royal... but it's old too! At the grand old age of 343, it needs regular TLC to carry on working. Voies Navigables de France is in charge of its maintenance and upkeep. So it has put a sailing schedule in place for the Canal du Midi. If you want to experience the joys of sailing on the canal, here's some essential information.

**NAVIGATION**

- **Navigation interrupted:** until **25 March 2025**, as well as **1 May**.
- **On request (by boaters):** from **26 March** to **30 April 2025**.
- **Free navigation:** from **2 May** to **2 November 2025**.
- **Navigation closed:** **2 November 2025**.

## FONSERANES LOCKS, OPERATING HOURS

Period	MORNING				AFTERNOON			
	First descent	Last descent	First ascent	Last ascent	First descent	Last descent	First ascent	Last ascent
From March 26 to April 30	8.40 am	9.25 am	10.15 am	12.15 am	1.15 pm	3.15 pm	4.05 pm	5.45 pm
From May 2 to Sept. 30	8.10 am	9.25 am	10.15 am	12.15 am	1.05 pm	3.20 pm	4.10 pm	6.50 pm
From October 1 to Nov. 2	7.40 am	8.25 am	9.15 am	11.15 am	12.15 pm	14.15 pm	15.05 pm	16.45 pm

# CALLING ALL WALKERS! GOOD TO KNOW

*The 9 locks, a place to enjoy in many ways*



## LET'S EAT!

**LE 9, THE 9 LOCKS RESTAURANT**  
Coche d'Eau Visitor Centre

**RESTAURANT / BRASSERIE / GLACIER**

«Bistronomy» menu, weekly set menus.  
Settle down under the barge prow-shaped  
glass roof or one of 2 terraces:  
give yourself a break to relax, enjoy... live!

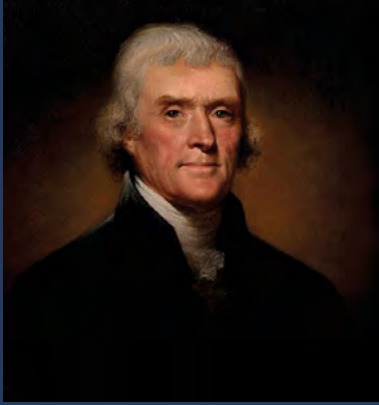
© 0 +33 (0)4 67 36 85 64



## A PLACE ACCESSIBLE TO EVERYONE

The 9 Locks on the canal du Midi in Béziers, are the most visited place in Hérault. The site is run by the Tourist Board of Béziers Méditerranée, since it was totally renovated and modernized (except the locks themselves of course) from 2015 to 2017. The changes were designed to allow everyone to come : disabled (whatever disability they endure) or not. The Tourist Board, the immersive cinema, the banks of the canal, the bridges, lifts, carpark, commodities etc... Every place is accessible by all means. Because the 9 Locks deserve to be seen and experienced by everyone, as well as everyone deserves to discover them.

# DID YOU KNOW THAT?



## THOMAS JEFFERSON'S JOURNEY ON THE CANAL DU MIDI

The 3<sup>rd</sup> president of the United States, Thomas Jefferson, sailed 9 days on the Canal du Midi in May of 1787, between Sète and Toulouse.

To study how to adapt this structure to the transportation needs of his country. Result: the Erie Canal, inaugurated in 1827, 1 year after the death of Thomas Jefferson, former U.S. ambassador to France.



## JEFFERSON'S PECAN TREE ON THE 9 LOCKS BOTANICAL TRAIL

In December 2021, a new tree enriched the botanical trail: a pecan tree (aka Jefferson Walnut). This 25<sup>th</sup> plant of the botanical trail - and modest shrub for now -, was planted with great care. It is watched very closely, as it symbolizes the whole - and long - historical tie, between Thomas Jefferson and La Fayette, which links the United States and France (\*). In a few years, one will eat pecans at the 9 locks !

**THE BOTANICAL TRAIL OF THE 9 LOCKS:** brochure available at the Tourist Information Office of the 9 locks, or downloadable on: [www.beziers-mediterranee.com/brochures](http://www.beziers-mediterranee.com/brochures)



## THE CANAL DU MIDI IN VERSAILLES

It is painted on the ceiling in the Hall of Mirrors and pays tribute to Riquet and the Sun King alike: this medallion features an allegory for the Atlantic (Neptune with a crown and trident, on the right) holding hands with the Mediterranean (his wife Amphitrite, on the left). The image symbolises the Canal du Midi which connects the two.

# LA MAISON DE PETIT PIERRE

SUR PLACE

22, AVENUE PIERRE VERDIER  
34500 BÉZIERS



À EMPORTER

[www.lamaisondepetitpierre.fr](http://www.lamaisondepetitpierre.fr)  
04 67 30 91 85



## FOR BIKES ENTHUSIASTS

**Two bicycle routes cross the agglomeration Béziers Méditerranée. They follow the towpath along the Canal du Midi.**

### EUROCYCLE ROUTE 8, La Méditerranée à Vélo :

The Mediterranean by Bike: from Cadiz (Spain), to Izmir (Turkey), 7,500 km along the Mediterranean basin. On the route through France, steps 4 and 5/15, cross Béziers Méditerranée. [www.francevelotourisme.com/itineraire-la-mediterranee-a-velo](http://www.francevelotourisme.com/itineraire-la-mediterranee-a-velo)

### VÉLOROUTE 80, The « Canal des 2 mers »:

from Royan to Sète, 750 km, along the towpath. Steps 27 and 28/30, « visit » Béziers Méditerranée. [www.canaldes2mersavelo.com](http://www.canaldes2mersavelo.com)

THE TOURIST OFFICE IS ALSO  
LABELED ACCUEIL VÉLO



## HIKING TRAILS

Two routes, created by the Tourist Board, and the French Hiking Federation allow to walk along the Canal du Midi, but also to walk the vineyard, or climb to the centre of Béziers:

### « BETWEEN CANAL DU MIDI AND VINEYARD »

10 km along the Canal and in the vineyards around Béziers and Villeneuve-lès-Béziers. Brochure available at the Tourist Office, at the 9 Locks, or downloadable from: [www.beziers-mediterranee.com/brochures](http://www.beziers-mediterranee.com/brochures)

### « THE CANAL DU MIDI AND BÉZIERS »

8 wonderful kilometers: departure from the 9 Fonseranes locks, towards the ancient center of Béziers, via the towpath of the canal, the banks of the river Orb, large public gardens, the Old Bridge and the canal bridge... On July 1, a brand new trail variant will be inaugurated: the one that runs along the ramparts of Béziers and allows you to climb (on foot or with a lift), to the cathedral ! Brochure available at the Tourist Office, or downloadable from: [www.beziers-mediterranee.com/brochures](http://www.beziers-mediterranee.com/brochures)



## "ACCUEIL VÉLO" LABELED SERVICE PROVIDERS NEAR THE CANAL

### • ACCOMMODATION

- Les berges du Canal' campsite, Tel 04 67 39 36 09  
Promenade des Vernets  
Villeneuve-lès-Béziers
- Bed and breakfast, la Villa Kumquats, Tel 06 59 53 89 25  
16 Avenue Enseigne Albertini, Béziers
- Guest house La Villa Guy Tel 04 67 35 26 49  
2 Rue Giuseppe Verdi, Béziers
- Zénitude Hôtel-Résidence Béziers Centre, 04 99 41 08 20,  
9 rue D'Alembert, Béziers
- Hotel-restaurant « la Prison », Tel 04 48 14 03 53  
Plan des Albigeois, Béziers

- Guest house Château de Raissac Tel 04 67 28 15 61  
route de Lignan, Béziers

### • RESTAURANTS, BREWERIES, WINECELLAR

- Le 9, site des 9 écluses, Tel 04 67 36 85 64  
Rue du Canal Royal
- ARLETT, le café vélo Tel 04 67 00 05 46  
Restoration/repair/creation of made-to-measure bicycles  
9 bis Bd Bertrand Duguesclin
- Restaurant l'Ecluse Tel 04 67 62 11 02  
16 avenue Pierre Bérégovoy  
Villeneuve-lès-Béziers

- Brewery Nootka, Tel 06 13 14 61 10  
10 rue du Romarin  
Villeneuve-lès-Béziers

- Alma Cersius, Tel 04 67 90 91 90  
Cooperative cellar,  
3, av. André Palmade,  
Villeneuve-lès-Béziers

### • BIKE RENTAL

- Relax Bike Tour, Tel 06 38 12 32 82  
Allées Paul Riquet, Béziers
- Paulette Hire, Tel 05 82 28 05 10  
83 Avenue du président Wilson  
Béziers
- Ô Vélos ! Tel 07 82 80 39 36  
33 boulevard Victor Hugo, Sérignan





The Boatman's House in the new port

**Downstream of the 9 locks, after the canal bridge and at the bottom of the lock of the Orb (the highest, deepest and most recent lock of the Canal du Midi) you arrive in the river port of Beziers: the Quai Port Neuf, now managed by the Tourist Office.**

It took over from the «Port Notre-Dame» in 1858, when the canal bridge diverted the traffic of boats, in order to avoid the crossing - often very perilous - of the Orb. Its commissioning came just in time with the wine boom in the Béziers region. It was a good thing: the Port-Neuf (Newport) is much larger than the old one. On its quays, warehouses followed one another and store thousands of barrels of wine, which were then transported to Sète or Toulouse on the barges of the Canal. But the development of rail transport sounded the death knell for this activity. Little by little, the warehouses closed and the buildings were destroyed. Even more so since the 1990s, when the Canal du Midi was designed exclusively for river tourism. Of its former vocation there remains: a warehouse, a small loading crane (at the entrance to the port), the «Café de Plaisance», installed there since the opening of the Port-Neuf. But it is with great pleasure that one strolls through this district, whether one stops for lunch, dinner, or just a drink in the shade of the plane trees: Le Café de Plaisance, the restaurant La Raffinerie, the traditional brewery «La Gorge Fraîche», the petanque court on the banks of the Canal have a «southern postcard» feel to them.

## THE BOATMAN'S HOUSE, HARBOURMASTER'S OFFICE AND TOURIST OFFICE ON PORT NEUF

### HARBOURMASTER'S OFFICE

The harbour master's office is located in the boatman's house (former lock keeper's house), in front of the lock of Béziers. The reception, mooring and water/electricity supply to the boatmen are taken care of here. The Port-Neuf offers: 3 water/electricity terminals with 6 electric sockets each (18 sockets) in operation, on a 136 m long stretch of land, offering 16 places to boats. Security is provided by video surveillance cameras.

### TOURIST OFFICE

Tourist information, documentation, travel advice, ticketing for shows and guided tours, City Cards...

### Maison batelière

2, Quai Port-Neuf

Harbour master's office: 04 67 01 84 21

Tourist Information Office: 04 99 41 36 36

### OPENING TIMES:

**1<sup>st</sup> April to 31<sup>st</sup> October:** 8.30am/12pm - 1.30pm/7pm - 1<sup>st</sup> of May closed

**Low season:** closed

# VILLENEUVE AND CERS

LAST STEPS ON THE CANAL DU MIDI IN BÉZIERS MÉDITERRANÉE

Villeneuve-lès-Béziers



## VILLENEUVE-LÈS-BÉZIERS

The lock of Villeneuve, a few metres from the bridge that crosses the Canal du Midi to access the historic centre of the town, had wooden doors, originally. Like its 62 sister-locks between Toulouse and Sète, it was then equipped with metal doors. The basin has not changed one iota: it sports like all the others this beautiful ovoid shape, unique in the world. So, as soon as one hits the lock (in the downstream direction, towards Sète and the sea), one passes under the bridge and arrives at the small port. The boaters, welcomed by a very graceful rustling fountain, can cast moorings. On the banks of the canal in Villeneuve, they find shops to fill their food reserves, have a meal at the restaurant, walk around hours on - on foot or by bike - on the towpath...

- **DOCKING AREA:** on the quay, drinking water facilities, via a payment/supply terminal
- **TOURIST OFFICE:** la gabarre (the barge), Bd Pasteur. Open July and August, Monday to Friday, 3 to 5 pm.

## CERS, LET'S MEET UNDER THE CAYLUS BRIDGE

It is one of 130 bridges built to restore the traffic on old roads interrupted by the Canal du Midi waterway. The bridge from Caylus in Cers, with its typical shape of the Riquet period (XVII<sup>th</sup> century) was built, like all the others, with stones found along the way. Until the 1930s, however, the inhabitants of Cers had to make a long detour through it: it was the only bridge that connected the village and the lands of the plain. In 1927 finally, a new bridge is born (it has moreover been fully restored during the fall of 2021). Close to the canal is established - also in the nineteenth century - an innkeeper, in a large building still visible today, which experienced various assignments. But as soon as one has crossed the bridge of Caylus, the Canal du Midi and its boaters leave Béziers Méditerranée. Bon voyage...



Cers



À PARTIR DE 22€ PAR ADULTE ET 12€ PAR ENFANT

PLONGEZ AU CŒUR DES 9 ÉCLUSES DE FONSERANES À BORD DE L'UNE DE NOS PÉNICHES CLIMATISÉES OU OMBRAGÉES

CRUZIÈRE SUR LE CANAL DU MIDI, DE 2 HEURES À LA JOURNÉE, AVEC OU SANS REPAS !  
DINER CRUZIÈRE AU CLAIR DE LUNE !

CONTACT & RÉSERVATION : 04 67 36 51 24 - LESBATEAUXDUMIDI.COM    





# Domaine VALJULIUS

Domaine viticole et vins de L'HÉRAULT  
Des vins issus du Terroir Languedocien :  
**VALJULIUS**

06 08 80 31 60 - 06 72 65 44 08

[domaine.valjulus@gmail.com](mailto:domaine.valjulus@gmail.com)

Insta : [domaine\\_valjulus](#) [domaine\\_valjulus](#)  



## Les berges du Canal

CAMPING

TENTE / MOBIL-HOME / CAMPING-CAR / CYCLISTE

PROMENADE DES VERNETS - VILLENEUVE-LÈS-BEZIERS

 04.67.39.36.09

[CONTACT@CAMPINGLBDC.COM](mailto:CONTACT@CAMPINGLBDC.COM)



LE SPÉCIALISTE DE LA LOCATION  
DE TOUS TYPES DE VÉLOS

SUR LE CANAL DU MIDI



## CAP AU SUD

EN BATEAU SUR LE CANAL DU MIDI

Détente et découverte aux 9 écluses de Fonseranes

Croisières pique-nique

Croisières Brunch

De 1h à 3h

Croisières Nature

Croisières promenade

[www.capausud.eu](http://www.capausud.eu) - 07 82 09 13 51



## OUR HEADQUARTERS

Mail Plein Sud  
1, avenue du Président Wilson  
34 500 Béziers

## OUR INFORMATION CENTRES

### • BÉZIERS

Centre Historique - Place du Forum  
Canal du Midi-9 Ecluses de Fonseranes-Rue du Canal Royal  
Canal du Midi - Quai Port-Neuf - Maison batelière

### • VALRAS-PLAGE

Centre Station - square René-Cassin

### • SÉRIGNAN

Maison de Site, les Orpellières, Sérignan-Plage

### • VILLENEUVE-LÈS-BÉZIERS

La Gabarre -Boulevard Pasteur, rives du Canal

### • BASSAN

Point I-mobile - Place Jacques-Villeneuve



BRING ME BACK TO THE TOURIST OFFICE,  
I WILL BE REUSED/RECYCLED

## CONTACTS

-  +33 (0) 4 99 41 36 36
-  [accueil.tourisme@beziers-mediterranee.com](mailto:accueil.tourisme@beziers-mediterranee.com)
-  [www.beziers-mediterranee.com](http://www.beziers-mediterranee.com)
-  [www.9ecluses.com](http://www.9ecluses.com)
-  Office de Tourisme Béziers Méditerranée
-  9 Ecluses de Fonseranes
-  [beziers\\_mediterranee\\_tourisme](https://www.instagram.com/beziers_mediterranee_tourisme)
-  [@BeziersMed](https://twitter.com/BeziersMed)
-  Office de Tourisme Béziers Méditerranée
-  [fr.pinterest.com/beziersmediterranee/](https://fr.pinterest.com/beziersmediterranee/)